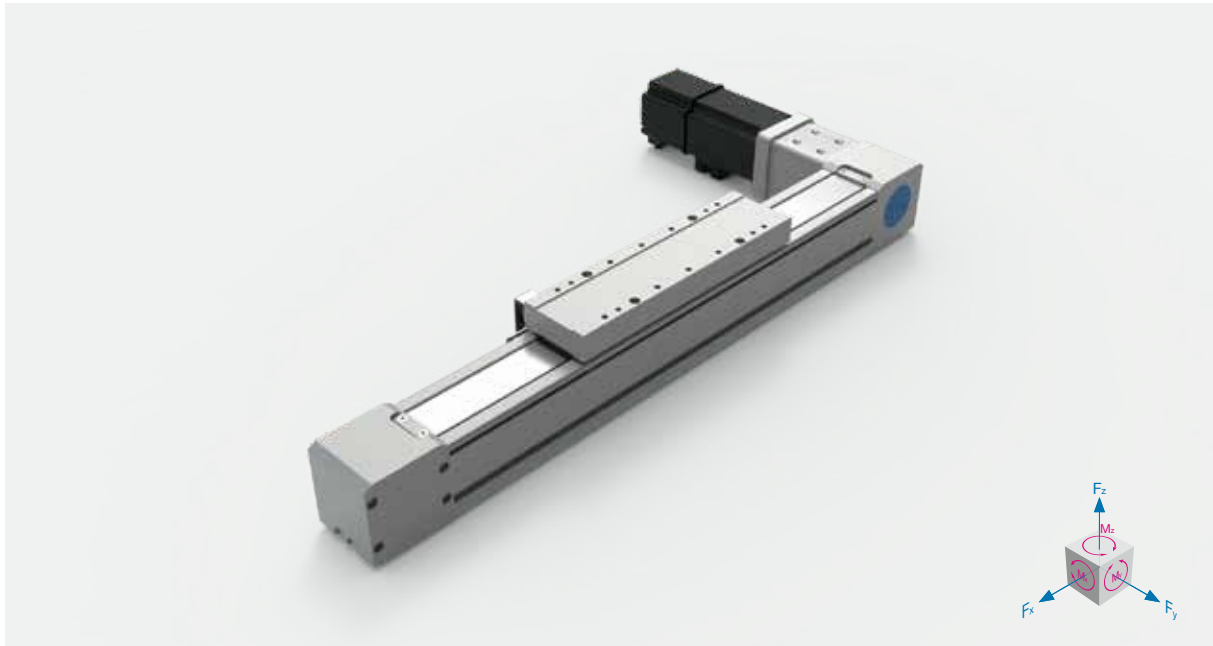


超長型全密同步帶電缸滑台

SUPER LENGTH SEALED TOOTHED BELT AXES LINEAR ACTUATOR

- 日規電缸滑台
JP linear actuator
- 歐規電缸滑台
EU linear actuator
- 超長型電缸滑台
Super length linear actuator**
- 活塞杆電動缸
Cylinder actuator
- 旋轉台
Rotary stage
- 精密對位平台
Precision alignment stage
- 減速機
Gear reducer
- 十字轉向器
Bevel gearbox
- 半密同步帶
Semi sealed toothed belt axes
- 全密同步帶
Sealed toothed belt axes



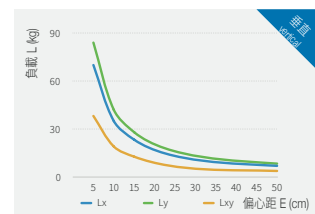
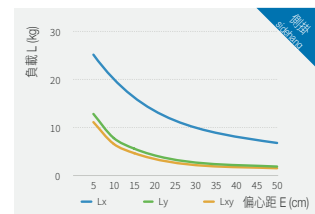
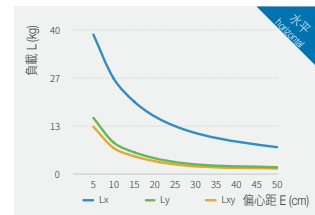
AIMTW 45L - 400 - RB - D - T2 - M100 - O - S3

超長型全密同步帶 Super Length Sealed Toothed Belt Axes	缸徑 Size (mm)	行程 Stroke (mm)	右側出軸方向 Right Solid Shaft Direction	馬達安裝位置 Motor Position	減速比配置 Reducer Ratio Config.	馬達功率 Motor Power (W)	光電開關 Optical Proximity Sensor Position	開關數 Number of Sensors
			RF 向前 Forward RB 向後 Backward RD 雙向 Two-way	D 直接安裝 Direct P 間接安裝 Parallel	無 None T 同步輪 Timing Pulleys G 減速機 Gear Reducor 1:2~1:10	M 三菱 Mitsubishi T 台達 Delta P 松下 Panasonic O 其他 Others Y 安川 Yokawa 100	無 None O 外掛 Hang Outside	S3 3個開關 3x Sensors Sn n個開關 nx Sensors

● 有選項 Optional ● 無選項 No options

馬達輸出 Motor Power (W)	100		
額定扭矩 Torque (Nm)	0.32		
同步帶規格 Toothed Belt Size (mm)	HTD3M - 15 x 3		
重複定位精度 Rep. Accuracy (mm)	±0.1		
減速比配置 Reducer Ratio Config.	同步輪 Timing Pulleys	1:2	減速機 Gear Reducor
同步帶導程 Toothed Belt Size (mm)	99		
最高速度 Max. Speed (mm/s)	5000		
行程範圍 Stroke Range (mm)	100...5000 / 100 間隔 Pitch		
每米行程的轉動慣量 Per Meter Stroke (kg cm ² /m)	0.4		
每公斤負載轉動慣量 Per Kg Working Load (kg cm ² /kg)	2.3		
最大負載值 Max. Load (Kg)	12	水平 Horizontal	12
		側掛 Sidehang	6

力和力矩 Force and torques	F _y (N)	360
	F _z (N)	720
	M _x (N.m)	12
	M _y (N.m)	42
面積二次矩 2nd moment of area	L _{xx} (cm ²)	40
	L _{yy} (cm ²)	45
0mm行程基本重量 Basic Weight for 0mm Stroke (kg)	1.7	
每100mm行程增加重量 Additional Weight per 100mm Stroke (kg)	0.5	
磁簧開關 Proximity Sensor	CS1-M-1M 觸點式1米 1m Contact Type	
	CS1-MN-1M 無觸點NPN型1米 1m Contactless NPN Transistor	
	CS1-MP-1M 無觸點PNP型1米 1m Contactless PNP Transistor	



以上負載力矩曲線，客戶選用之負載需在我司產品最大負載範圍內 Above load torque curve, the loading should be within the maximum load range

TW

45L

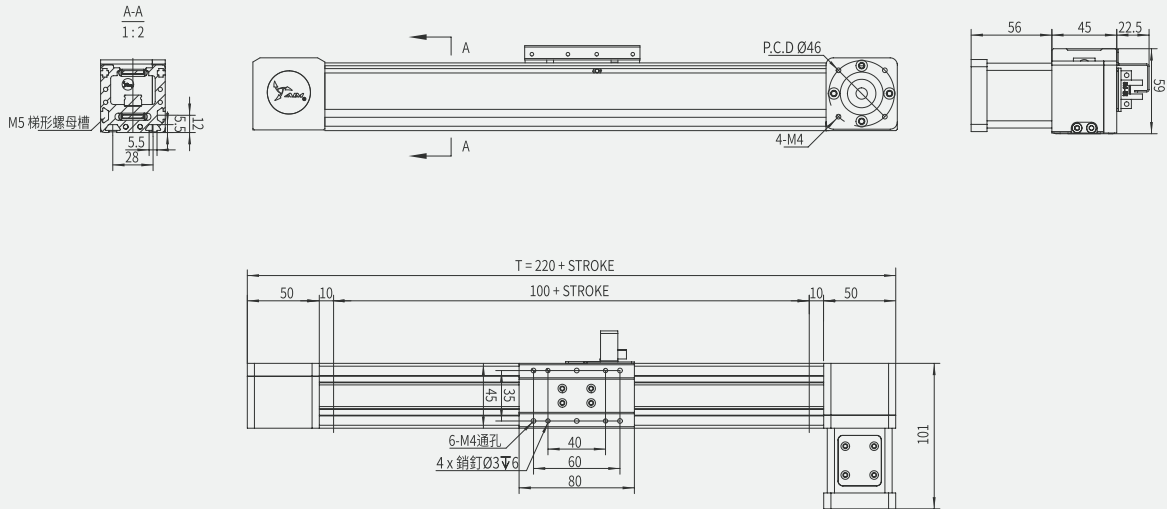
60L

80L

112L

AIMTW45L-RF-D 向前直接安裝 motor direct forward installed

單位 Unit: mm

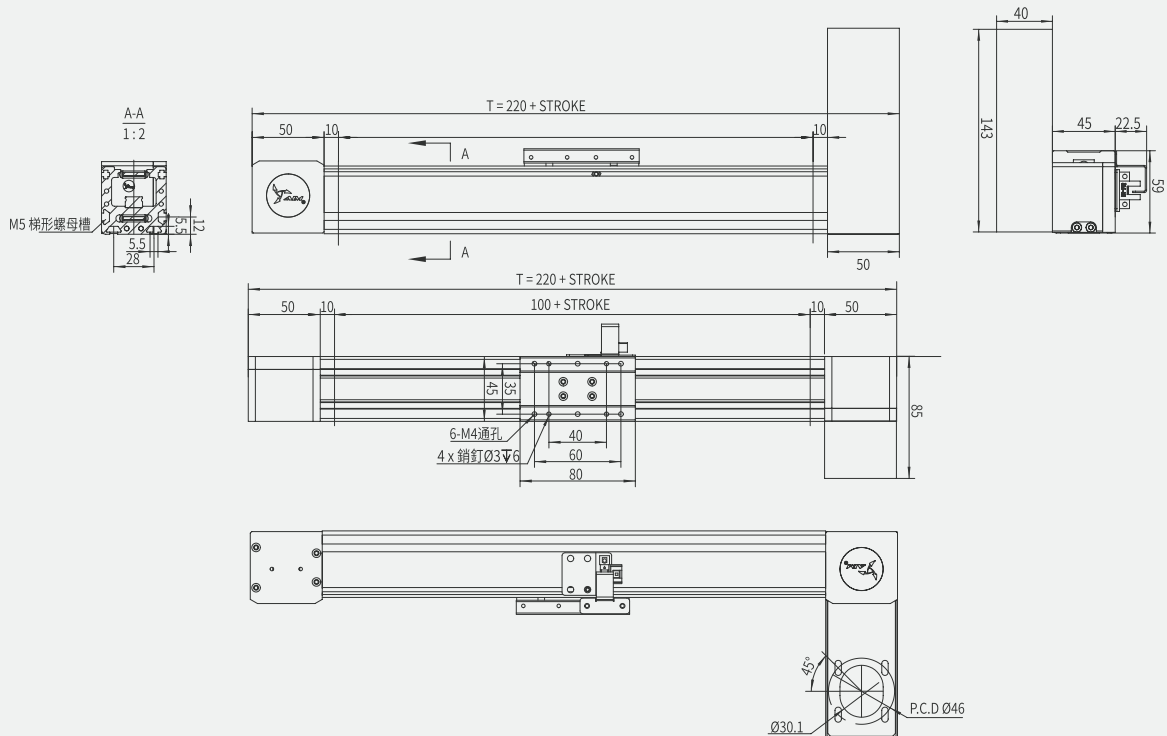


本圖面僅供參考用途，實際尺寸皆以實際提供之2D/3D圖紙為準 This drawing is for reference only. The actual dimensions are based on the actual 2D / 3D drawings provided.

- 日規電缸滑台
Linear actuator
- 歐規電缸滑台
EU linear actuator
- 超長型電缸滑台
Super length linear actuator
- 活塞杆電動缸
Cylinder actuator
- 旋轉台
Rotary stage
- 精密對位平台
Precision alignment stage
- 減速機
Gear reducer
- 十字轉向器
Bevel gearbox
- 半密同步帶
Semi sealed toothed belt axes
- 全密同步帶
Sealed toothed belt axes

AIMTW45L-RF-P 向前間接安裝 motor parallel forward installed

單位 Unit: mm

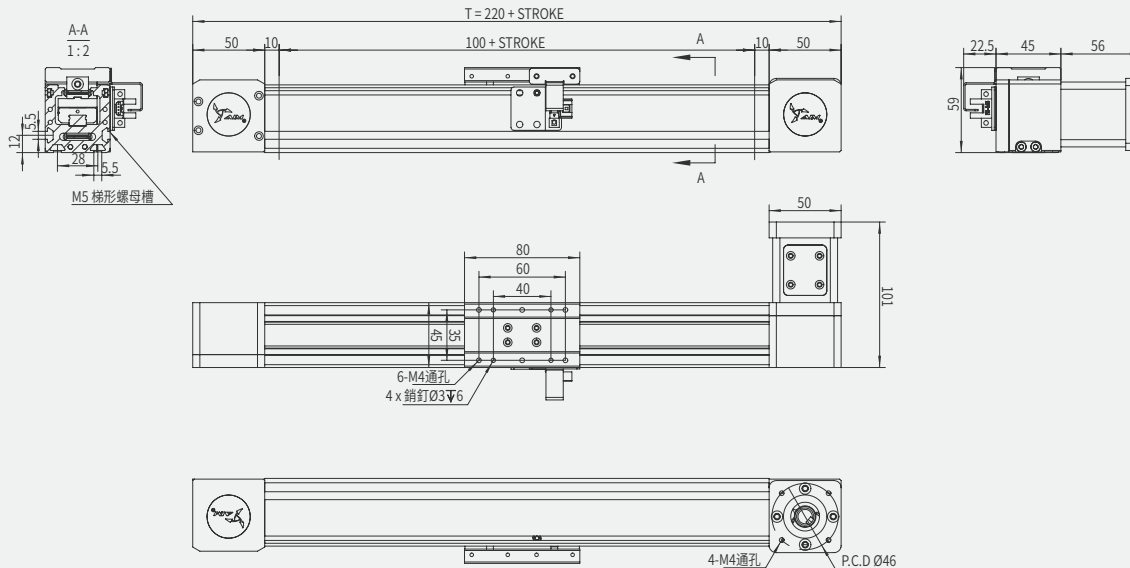


本圖面僅供參考用途，實際尺寸皆以實際提供之2D/3D圖紙為準 This drawing is for reference only. The actual dimensions are based on the actual 2D / 3D drawings provided.

- TW
- 45L
- 60L
- 80L
- 112L

AIMTW45L-RB-D 向後直接安裝 motor direct forward installed

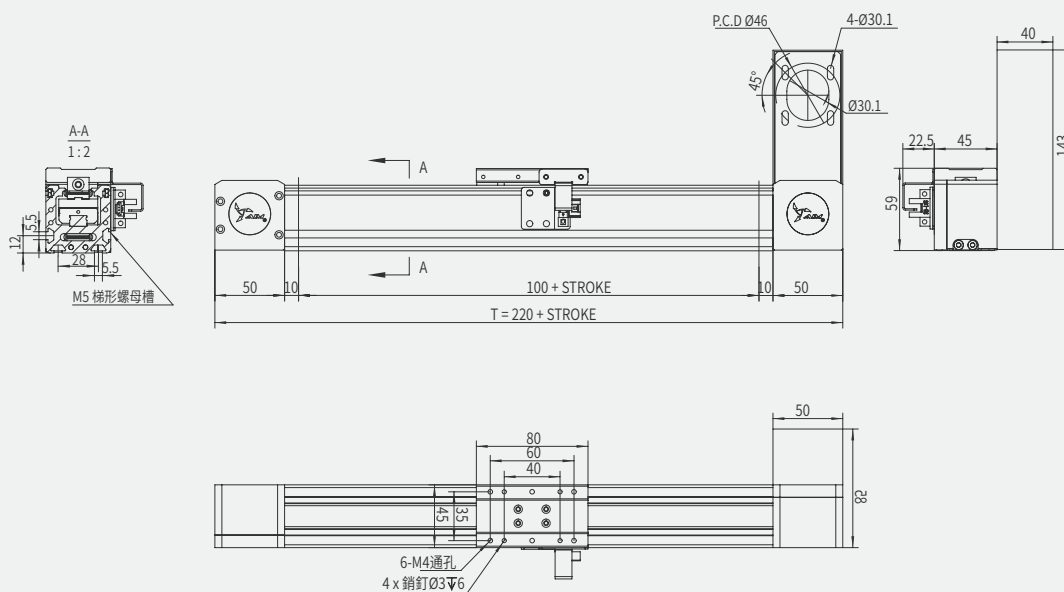
單位 Unit: mm



本圖面僅供參考用途，實際尺寸皆以實際提供之2D/3D圖紙為準 This drawing is for reference only. The actual dimensions are based on the actual 2D / 3D drawings provided.

AIMTW45L-RB-P 向後間接安裝 motor parallel forward installed

單位 Unit: mm



本圖面僅供參考用途，實際尺寸皆以實際提供之2D/3D圖紙為準 This drawing is for reference only. The actual dimensions are based on the actual 2D / 3D drawings provided.

- 日規電缸滑台
JP linear actuator
- 歐規電缸滑台
EU linear actuator
- 超長型電缸滑台
Super length linear actuator
- 活塞杆電動缸
Cylinder actuator
- 旋轉台
Rotary stage
- 精密對位平台
Precision alignment stage
- 減速機
Gear reducer
- 十字轉向器
Bevel gearbox
- 半密同步帶
Semi sealed toothed belt axes
- 全密同步帶
Sealed toothed belt axes

TW

45L

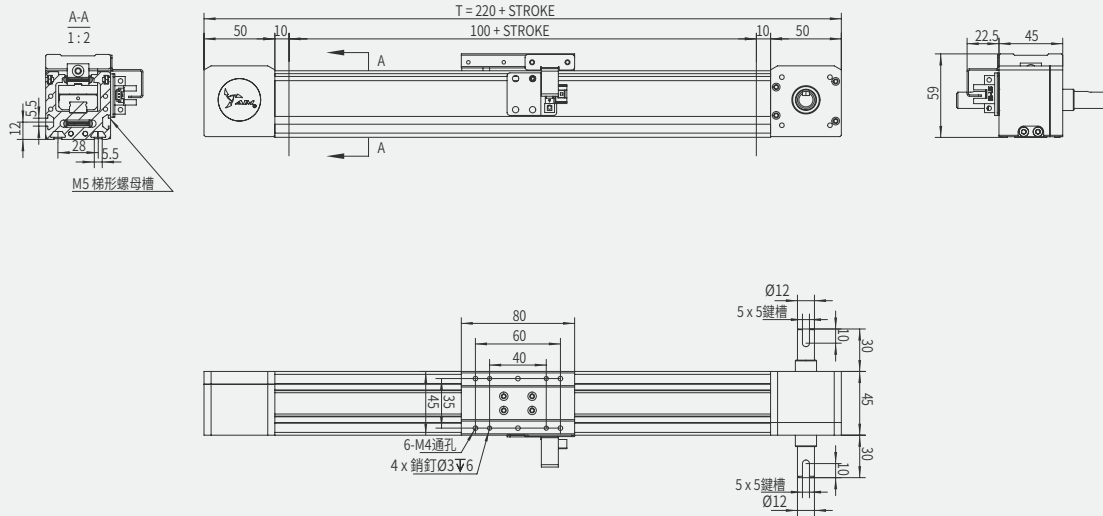
60L

80L

112L

AIMTW45L-RD 雙出軸 dual Solid Shaft

單位 Unit: mm



本圖面僅供參考用途, 實際尺寸皆以實際提供之2D/3D圖紙為準 This drawing is for reference only. The actual dimensions are based on the actual 2D / 3D drawings provided.

- 日規電缸滑台
Linear actuator
- 歐規電缸滑台
EU linear actuator
- 超長型電缸滑台
Super length linear actuator
- 活塞杆電動缸
Cylinder actuator
- 旋轉台
Rotary stage
- 精密對位平台
Precision alignment stage
- 減速機
Gear reducer
- 十字轉向器
Bevel gearbox
- 半密封同步帶
Semi sealed toothed belt axes
- 全密封同步帶
Sealed toothed belt axes

- TW
- 45L
- 60L
- 80L
- 112L